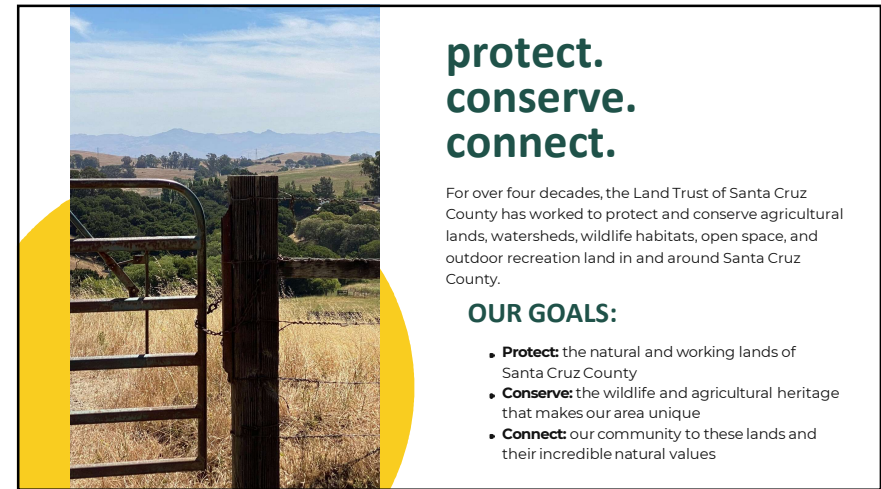




1



2



3



4



# 01.

## Protect Habitat for Biodiversity and Steward High-Value At-Risk Lands



### Wildlife Corridor

**Protect** 3,000 acres of core habitat in the Santa Cruz Mountains and the Gabilan Range to support wildlife movement and adaptation to climate change.

**Assist** partner organizations in protecting an additional 3,000 acres within the linkage.

**Partner** in the development of the wildlife crossing across Highway 101.



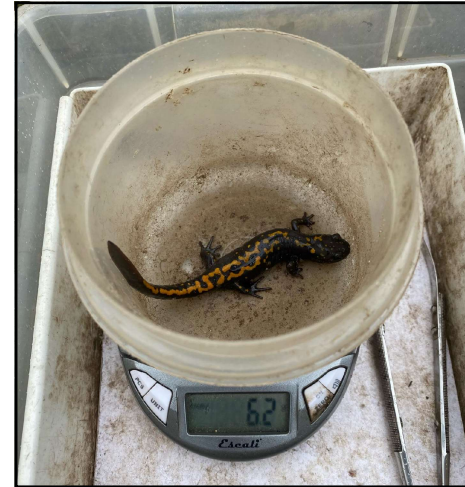
### Rare & Endangered Species

**Protect** 400 acres to benefit the Santa Cruz Sandhills and other priority habitat areas.

**Facilitate** the construction of a Highway 1 wildlife crossing for the Santa Cruz long-toed salamander and other species.

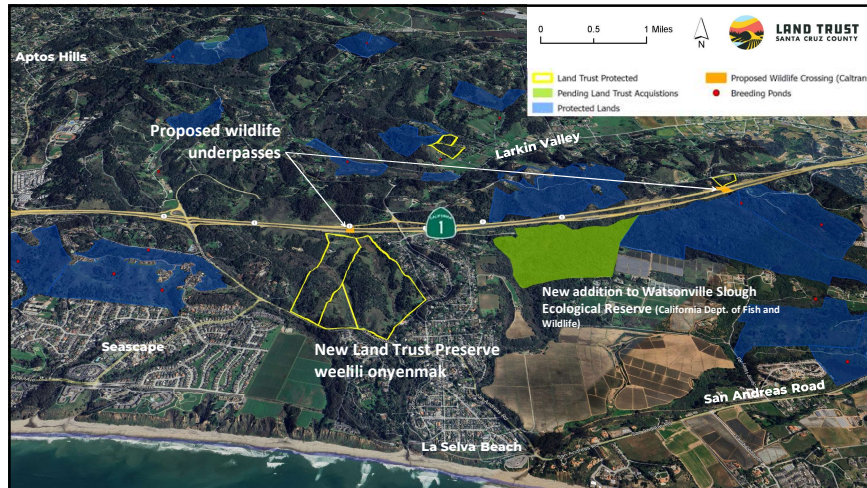
**Restore** at least 60 acres of priority habitat to protect rare species and increase ecosystem function.

5



## SANTA CRUZ LONG-TOED SALAMANDER

6



7



8





9



10

## 02.

### Protect and Manage Working Lands for Resilience in the Face of Climate Change

#### Conservation for the Community

**Protect** 500 acres of prime farmland from potential development.

**Support** an equitable process to update the City of Watsonville's General Plan that balances prime farmland protection with the need to provide compassionate housing.

#### Protect, Restore, and Repurpose

**Protect** 300 acres of agricultural lands at risk of impact by climate change.

**Restore** 40 acres of unsustainable agricultural lands at risk of flooding from climate change and sea level rise.

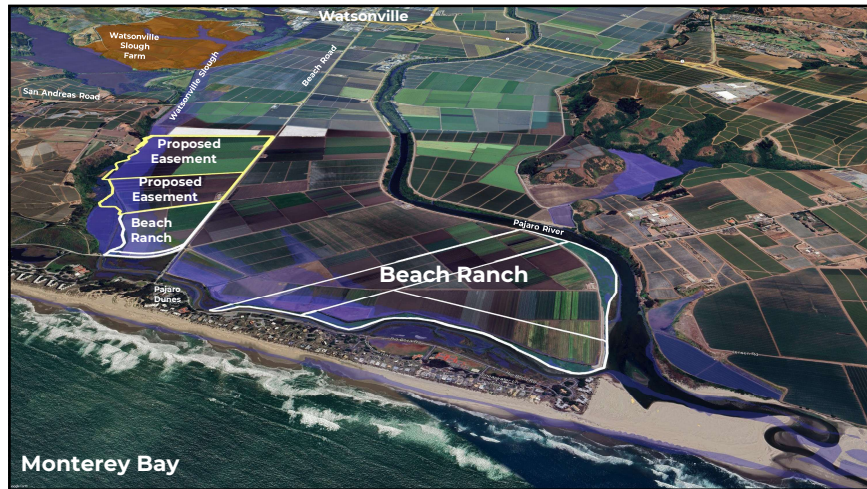
**Protect** 200 additional acres of farmland, retiring unsustainable fields as appropriate, to advance climate change resilience along the Watsonville Sloughs and Pajaro River.

11



12





13

### 03.

#### Create Access to Nature for All, Especially Under-Resourced Communities



##### Community Harvest

**Provide** access to 50,000 visitors per year at the Watsonville Slough Farm.

**Partner** with schools, local government, environmental, and civic organizations to provide enrichment experiences for an additional 5,000 people at Watsonville Slough Farm each year



##### Access for All

**Help** at least four community partners to secure natural and working lands access for their under-resourced constituents.

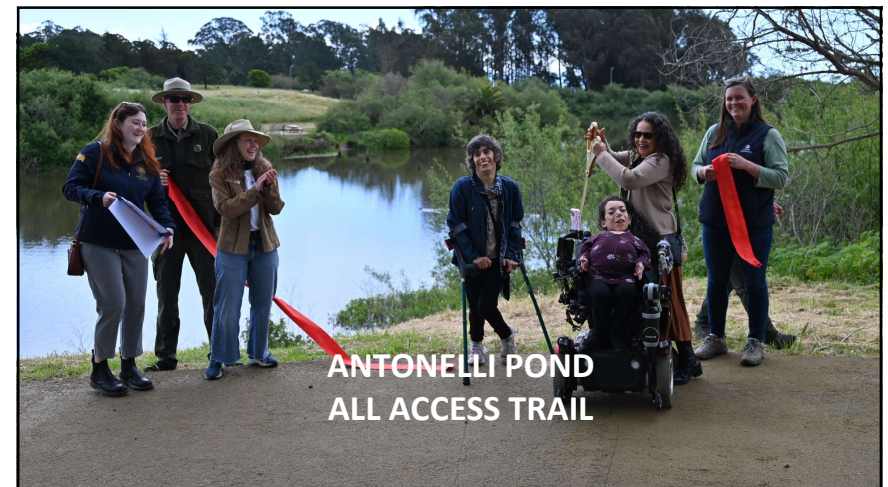
**Assist** the City of Watsonville in completing the 1.5-mile all-access Lee Road Trail to Watsonville Slough Farm from downtown and a walkable path to connect neighborhoods to the Watsonville Slough Farm.

**Work** with agency partners to incorporate public access trails into the Pajaro River Flood Risk Management project, advancing the vision of a trail connecting Watsonville to the sea.

14



15



16



## INTERPRETING THE BENEFITS OF WORKING LANDS AT THE BYRNE-MILLIRON FOREST



Sustainable Forestry:  
Good for the land and good for the people!

17

## WATSONVILLE COMMUNITY HARVEST



- Trails and outdoor connection equity
- Access to organic produce
- Education
- Co-creating with the community
- Community gardens

18

## 04.

Increase Public Investment and Capacity for Land Management in Santa Cruz County



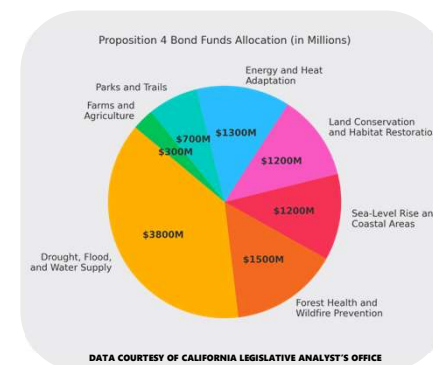
### Sustainable Conservation for Santa Cruz County

**Secure** a dedicated, sustainable, long-term local public funding stream for public and private managers of open space, conservation lands, public access, and associated partners.

**Advocate for** and secure public funds from state and federal sources to deliver outstanding projects to our community.

19

## PROP 4: More resources are coming, and we are ready!



In the past three years, the Land Trust raised **over \$40 million** from state and federal grants, bringing substantial resources to bear for our community.

20



